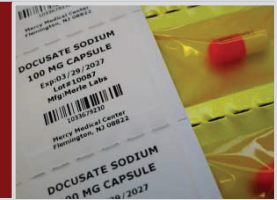


AUTO-PRINT[®]

Unit Dose Packaging System for Oral Solid Medication

Manufactured by Medical Packaging Inc., LLC



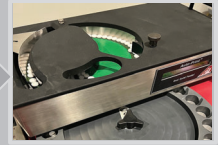
DECREASE PACKAGING COSTS

INCREASE OPERATIONAL EFFICIENCY

REDUCE MEDICATION ERRORS



Optional Oral Solid Feeder Attachment



Optional Barcode Verifier Attachment



The Medical Packaging Inc., LLC (MPI) **Auto-Print[®]** is a complete barcoding packaging solution for oral solid medications. This affordable, semi-automated, table-top packaging system is certified UL compliant and is manufactured to adhere to strict technical guidelines to assure optimum performance of the packaging equipment and safe packaging of oral solid medication.

MPI's **Auto-Print[®]** provides the capability to barcode and package tablets and capsules into unit dose at the rate of sixty (60) packages per minute and is also offered in stainless steel for use in clean room environments. Additional functionality for specialized packaging can be achieved through the optional Oral Solid Feeder (OSF) attachment, adjustable variable length packaging option, and optional barcode verifier attachment, which automatically scans each package as a final check after the packaging of the unit dose container is completed providing verification that every barcode generated by MPI's packaging systems has a high-quality, machine-readable barcode that can be scanned at the bedside.

MPI's **Auto-Print[®]** is powered by MPI's exclusive **Pak-EDGE[®] UD Barcode Labeling Software 2.0**, which is capable of generating and printing all linear, 2D and GS1 barcodes and offers advanced barcoding capabilities and configurations, which typically includes product NDC code, local expiration date and date packaged. In the event of a product recall, Pak-EDGE[®] can easily trace the packaged product so the pharmacist can take immediate corrective action to remove the product from inventory. MPI's Pak-EDGE[®] software is optimally integrated with First DataBank[®] drug data, imprints and images database.

The final unit dose package produced by MPI's **Auto-Print[®]** is composed of **Auto-Print SUPERTHERM[®]** and **Auto-Print SUPERCEL[®]**, which were developed exclusively for use with MPI's **Auto-Print[®]** packaging system and are compliant with FDA regulations for packaging. Multi-layered composition of these consumable materials, combined with the built-in low sealing temperature process assures there is no degradation to medication during the packaging process and that a safe, tamper-proof, easy to open, unit dose package containing detailed medication and barcode information will be delivered to the bedside each and every time, ensuring patient safety.

KEY FEATURES

- Packages up to sixty (60) unit dose packages per minute.
- MPI's exclusive **Pak-EDGE[®] UD Barcode Labeling Software 2.0** features multiple reporting capabilities, eliminating the need for paper logs, and provides the ability for a pharmacist / administrator to approve packaging runs remotely.
- Optional software license available to print **Medi-Dose[®] LaserLabel[™] Lid Label MD200 and MD240** blister pack labels for tablets and capsules.
- **Serialization packaging feature is standard and provides customers with the ability to print individual packages with a unique serial number and barcode in compliance with the Drug Supply Chain Security Act (DSCSA).**
- Standard package size of 2.0"W x 1.5"L. Optional adjustable variable package length feature includes pre-loaded software templates to adjust package length to 1", 1-1/8", 1-1/4", 1-3/8", 1-1/2", 1-7/8", or 2 -1/4".
- Includes two (2) pill chutes and (2) feed disks to accommodate packaging of most standard size tablets or capsules. Additional chutes/disks available to accommodate non-standard size medication. Pill chute design consistently guides the pills to the center of the package reducing the opportunity for crushed pills.
- Class A and Class B packaging materials available.
- **Auto-Print SUPERCEL[®]** is offered in six (6) different colors to assist in coding expiration dates or designating controlled medications.
- **Auto-Print SUPERFOIL[®]** is available for packaging chemotherapy drugs.
- Model #9300E Printer – Ethernet port ready, 300 d.p.i.
- Minimal Cost Per Dose (CPD)
- Compact footprint.

TECHNICAL SPECIFICATIONS

Dimensions:	36" L x 15" W x 14" H
Weight:	65 lbs.
Power:	115 VAC 50 Hz or 230 VAC 60 Hz, 320W
Safety:	CE, NRTL (MET) US, C
Sealing Temp:	Approximately 200° F (95° C)
Rate:	60 Doses/Minute



To request information, contact:

sales@medpak.com

Auto-Print, Auto-Print SUPERTHERM, Auto-Print SUPERCEL, Auto-Print SUPERFOIL, Pak-EDGE are registered trademarks of Medical Packaging Inc., LLC.



8 Kings Court | Flemington | New Jersey | 08822 | USA
Toll-Free.800-257-5282 | Phone.609.466.8991 | Fax.609.466.3775 | www.medpak.com



101222