

# Pak-EDGE® UD Barcode Labeling Software 2.0

The latest version of our advanced barcode labeling software for Medical Packaging Inc., LLC (MPI) packaging solutions designed to increase operational efficiency and reduce medication packaging errors.

## KEY FEATURES

- 1D and 2d barcode capabilities including Data Matrix, Aztec, and GS1 formats. Automatically generates 11 digit NDCs.
- Advanced Barcode Builder - allows users to add fields and delimiters to create complex linear or 2D barcodes. May include expiration date and lot numbers or any combination of fields.
- Enhanced Tall Man Lettering - option searches for every occurrence of the drug and automatically prompts the user to accept Tall Man lettering suggestions.
- Automatic calculation of default shelf life and sort term calculations including suggested expiration options for exact day or last day of the month. Calculated date will never exceed the shelf life of the medication.
- Built-in serialization feature allows users to print individual packages with a unique serial number and barcode in compliance with the Drug Supply Chain Security Act (DSCSA).

## TECHNICAL REQUIREMENTS

Computer with Windows® 10 operating system or higher.
8 GB RAM Required
10 GB Available Hard Drive Space
USB Port(s)
Internet access for updates and remote support
Pre-Requisite: SQL Server Express 2019 (Windows component)



## Enhanced Security Options

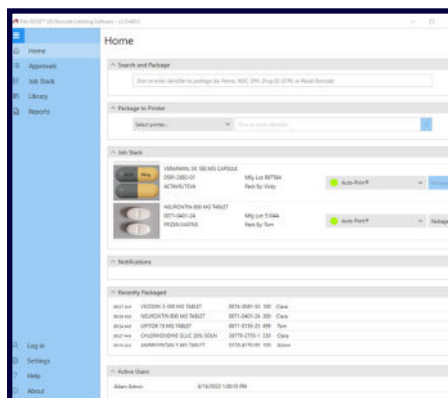
Multi-tiered security levels provide additional safety in packaging by establishing passwords and security controls, allowing you to create new user groups with custom permissions and an auto log off feature. With the batch approval feature, print jobs, library additions, and post checks can be queued for approval. Comprehensive management reports are available including Daily Brief, Daily Detailed Report, Custom, and Totals with export and printer type selection options. The software also has lot traceability for drugs and materials as well as an automatic system back-up feature.

## Optional First Databank Integration

We offer an optional First Databank (FDB) subscription to customers as an additional component for use with their Pak-EDGE® UD Barcode Labeling Software. A FDB license includes a source drug library (contains generic name, trade name, strength, measure, and form, NDC number, manufacturer name, control number, drug class code), image database, imprints module, and mapping tool. This is only offered to US/NDC customers only and annual renewal fees apply.

## Label Design Elements

A label designer tool provides fully customizable label formats to create and store custom templates with an intuitive user interface. Components include a WYSIWYG editor, Windows® fonts, default templates, drawing tools, and QR code feature. A label preview provides the ability to see the final label layout prior to printing.



Visit Us Online: [medpak.com](http://medpak.com)

